

PHELWANA

GAME LODGE



NEWSLETTER

ENVIRONMENTAL IMPACT ASSESSMENT

With our animals growing in numbers, we have appointed a team of environmental impact assessors to ensure that our veld and resources can accommodate our animal numbers. They will be completing an assessment on our waters, grasses, trees, birds of the carrying capacity of our land to ensure a happy and healthy eco environment.

Volume1/Issue3/February 2014

GREETINGS FROM THE BUSHVELD IN THIS BEAUTIFUL MONTH OF FEBRUARY!

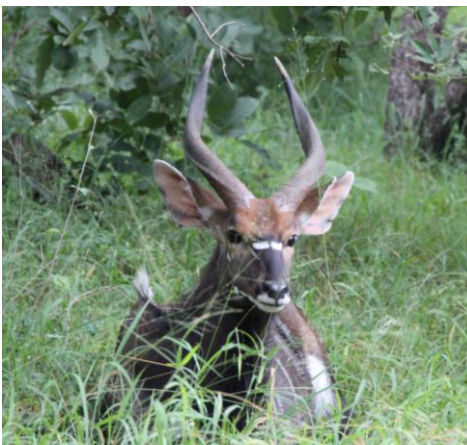
Phelwana Game Lodge has seen much rain in the first two months of 2014, and the bush is looking green and lush. The animals are thriving, and we are very proud to announce two additions to our buffalo herd, which has now grown to 12. We are not only proud to announce that our animal numbers are growing, but our Phelwana Family is also growing with the appointment of an Executive Chef, Assistant Chef and a Guest Liaison Officer.

“We are not only proud to announce that our animal numbers are growing but our Phelwana family is also growing with the appointment of an Executive Chef..”

OUR PHELWANA TEAM IS GROWING!

Hannes Barnard, Phelwana’s new Executive Chef hails from Hoedspruit and brings with him a wealth of experience from the Luxury Game Lodge industry. He is not only a qualified chef, but a Professional Hunter and Blockman. With our new restaurant and kitchen nearing completion, Phelwana, together with Hannes, promise to treat our guests to gourmet African dishes.

Hannes is joined by his wife, Amanda, our Guest Liaison Officer, who will be dedicated to attending to our guest’s needs and assisting guests to plan their activities to ensure an unforgettable stay at Phelwana Game Lodge.



A Male Nyala enjoys the coolth of the long grass.

Mavis Khoza has also joined the restaurant team as our Assistant Chef. Her specialty lies with baking and desserts, our High Teas promise to satisfy our guest’s appetite for sweet and savoury afternoon treats.

GARDEN LANDSCAPING AND FISH PONDS



The Koi pond in the garden in front of the Main Lodge.

A FACELIFT TO THE OLD LODGE BUILDING

We decided to give the old lodge building, now the Phelwana Room, a new look along with its new roof. This building gives a home to the restaurant and reception.



A facelift to the old Lodge building, plastering of the walls has given the Lodge new look.

SOME NEW SIGHTINGS

As you are aware, the bushveld is an ever changing environment, you never know what you are going to find from one bush to the next. However, for many years, the one animal that did not reside on the property was jackal. On an evening drive recently, we were very excited to see a pair of black-backed jackal meandering along the road leading up to our front gate. They have since been observed by the Bush School and various contractors driving on the property. Jackals are very territorial animals, therefore we are certain they have made Phelwana Game Lodge their home and you can often hear their eerie howl echoing through the bush at night.

A leopard has also made a couple of appearances lately and was observed by guests in January prowling the bush at night.



Black-backed Jackals have returned to Phelwana Game Lodge.



The Lounge in the Phelwana room has been tastefully decorated for your enjoyment.

PHELWANA ROOM COMPLETED!

The Phelwana Room, which houses our restaurant and lounge, has been tastefully furnished with old and new family heirlooms. Our lounge is comfortable and inviting for guests to enjoy our private collection of books at leisure. Sit back and listen to the sound of beautiful African music whilst sipping a cup of freshly brewed coffee.



A European Bee-eater photographed this month.

OPPORTUNITIES FOR BIRD LOVERS!

We have recently renovated the bird hide in the middle of the Phelwana Dam which is a sanctuary for bird lovers to sit on the tranquil island and enjoy the abundant birdlife at Phelwana Game Lodge. Fish Eagles and of Kingfishers can often be heard in trees around the dam trying their luck to catch their daily meal. A picnic lunch can be made in advance to accompany you whilst bird watching.



The bird hide on the Phelwana Dam has been re-thatched and re-roofed.

OUR DAMS ARE FULL

Phelwana has seen over 700 mm of rain this season and our dams have filled up to sustain the animals during the winter months to come. The Hippos have returned to Hippo Dam since the water level has risen and can be seen frolicking in the evenings as photographed aside.



Our resident bull photographed in Hippo Dam.

Contact Us

Phelwana Game Lodge
Guernsey Road
Hoedspruit
Limpopo
+27 15 793 2475
Book@Phelwana.co.za
www.phelwana.co.za

We sincerely hope that you have enjoyed our monthly update!

Kind regards

The Phelwana Game Lodge Team!